

# Multi-Gyn® LIQUIGEL



READ THIS INFORMATION LEAFLET CAREFULLY BEFORE USING MULTI-GYN LIQUIGEL AND KEEP IT FOR REFERENCE

## Multi-Gyn LiquiGel - Treats and relieves vaginal dryness

- Instantly relieves vaginal dryness and stimulates the natural moisture
- Prevents irritation and conditions the vaginal tissue
- Supplements and supports the natural vaginal moisture
- Is natural, safe and protects the vaginal flora

## How Multi-Gyn LiquiGel works

Multi-Gyn LiquiGel instantly relieves vaginal dryness. It optimizes the condition of the vaginal tissue and stimulates its own natural moisture. Multi-Gyn LiquiGel is based on the patented 2QR-complex. This natural substance is derived from plants and consists of bio-active polysaccharides. It has the unique ability to neutralize harmful microorganisms in a safe and effective way. It is therefore also suitable to support the natural healing process of tissue damage in the intimate area.

Multi-Gyn LiquiGel stimulates the vaginal moisture which helps to relieve and protect against vaginal dryness and irritation. It helps the body's own moisturizing process in achieving the natural balance and does not affect the vaginal flora. As the vaginal tissue re-moisturizes it recovers the natural elasticity and functions. Multi-Gyn LiquiGel provides a bio-adhesive film over the mucous membrane, to ensure long lasting moisturization and to maintain a healthy vaginal flora. During sexual intercourse it supplements and supports the natural vaginal moisture. Regular application of LiquiGel reduces irritation and supports the optimal condition of the vagina. The formulation is natural, safe and gentle because it is not based on toxic substances or harsh chemicals and therefore does not have any negative side effects.

**Multi-Gyn LiquiGel is not a hormone treatment, but through its unique mode of action it is a medical device class IIa.**

## Indications

- vaginal dryness during and after menopause
- vaginal dryness caused by hormonal changes, medication and stress
- vaginal dryness during sexual intercourse
- vaginal atrophy, irritation and/or discomfort

## Directions for use

• **In the case of vaginal dryness** apply Multi-Gyn LiquiGel in an ample quantity at least once a day or whenever relief is desired.

• **For prevention of vaginal dryness and irritations related to vaginal dryness** apply Multi-Gyn LiquiGel twice a day in an ample quantity for a period of at least 5 days.

• **To stimulate the natural moisture of the vagina** apply Multi-Gyn LiquiGel every day just before you go to sleep.

The gel will not stain your underwear. It is safe and gentle and will give you direct relief of vaginal dryness, irritations and itch.

Multi-Gyn LiquiGel should not be used longer than 30 consecutive days, so that the vaginal flora can regulate itself without support. In case of persistent or recurrent complaints you should always contact your physician.

## Please note!

Multi-Gyn LiquiGel is an active product that moisturizes the intimate area, conditions and stimulates natural moisture of the tissue. As an active product Multi-Gyn LiquiGel can give you a warm, tingling feeling after application. This is completely normal and will disappear after a few minutes.

## Ingredients

LiquiGel contains over 25% of the 2QR-complex. Other components are plant glycerin, the natural thickener Xanthan Gum and the natural "cell fluids" regulator (osmoregulator) Betaine.

Multi-Gyn LiquiGel does not contain preservatives, hormones, silicones, ingredients of animal origin, harsh chemical substances or fragrances and is completely harmless. It is not greasy, does not leave stains and is water-soluble. It does not affect tampons or condoms.

**Active ingredients:** Galactoarabinan Polyglucuronic Acid Crosspolymer\*, Glycerin, Betaine, Xanthan Gum

\*2QR-complex: patented bio-active polysaccharides. [www.2QR.com](http://www.2QR.com)

Allergies to the ingredients of Multi-Gyn LiquiGel are very rare. When you have doubts apply a little bit of gel on the inside of the forearm. When an itching red spot appears we advise you not to use Multi-Gyn LiquiGel.

## Side effects

Multi-Gyn LiquiGel has no known side effects and is a safe and natural formulation. Multi-Gyn LiquiGel is not a contraceptive and contains no spermicide. However, influence on the activity of sperm cells has not been researched.

## Interference with medication

Multi-Gyn LiquiGel does not interfere with medication.

## Pregnancy and lactation

There are no known contraindications for the use of Multi-Gyn LiquiGel during pregnancy and while breastfeeding.

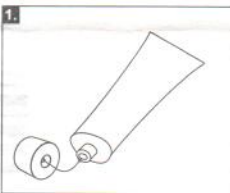
## Storage

It is advised to keep Multi-Gyn FloraPlus between 10°C and 25°C (Room temperature).

## Application

### • External application

In the case of dryness of the outer intimate area (the vulva) you can apply Multi-Gyn LiquiGel by finger (always wash your hands before and after you apply the gel).



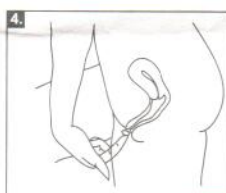
1. Take the cap of the tube. Use the backside of the cap to pierce the seal, prior to initial use.



2. Take the tube in one hand and keep the index finger of your other hand close to the tube like the picture shows. Squeeze the tube slightly. Keep squeezing until you have an ample quantity on your index finger like the pictures shows.



3. The amount on your index finger should be at least the amount of a fingertip (2 ml)



4. Apply the gel on the outer intimate area.

## Manufactured by:

BioClin BV, Delftechpark 55,  
2628 XJ, Delft, The Netherlands



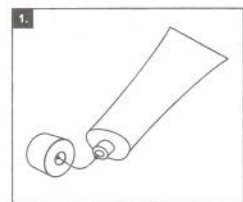

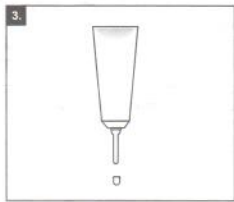
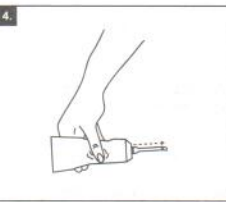
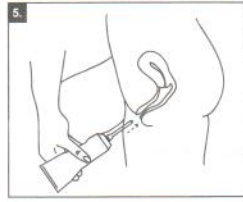
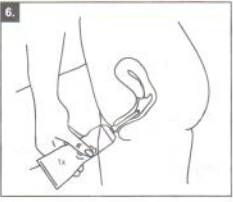
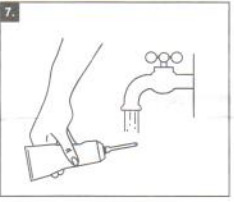
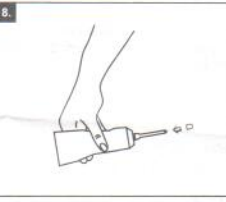
0482

03-2012  
07818671  
BC1221.1

[WWW.MULTI-GYN.COM](http://WWW.MULTI-GYN.COM)

#### • Internal application

The special applicator can be used. It is included in the box and can be screwed onto the tube. After use you can leave the applicator on the tube, wash it with warm water and then place the cap on the applicator. When you prefer to use your finger; wash your hands and apply at least the amount of a fingertip on the tip of your index finger. Insert your finger into your vagina. Insert your finger into your vagina.

1.  1. Take the cap of the tube. Use the backside of the cap to pierce the seal, prior to initial use.
2.  2. Screw the special applicator, which is inside in the box, onto the tube.
3.  3. Take the small cap off the applicator.
4.  4. Take the tube in one hand and squeeze slightly until the gel comes out of the tip of the applicator. When the gel comes out you know that the applicator is filled with gel and ready for use. Practise how much will come out with a slight squeeze; you need at least the amount of a fingertip (2 ml).
5.  5. Insert the attached applicator into the vagina as the picture shows. The vagina is 7-8 cm long and corresponds with the index finger of an average woman. The length of the applicator is approximately the same as an index finger and will not damage the cervix.
6.  6. Squeeze the tube slightly. You need at least the amount of a fingertip. There is however no limitation and no hazard if you apply more.
7.  7. After use you can leave the applicator on the tube and rinse it with warm water.
8.  8. Place the small cap on the applicator.

#### Background information

##### Vaginal dryness and discomforts occur frequently

Vaginal dryness and discomfort affect over half of women in all ages and stages of life. It is especially a naturally occurring problem of women in and after their menopause because of the hormonal changes. Normally, the walls of the vagina stay lubricated with a thin layer of clear fluid. During menopause, the drop in estrogen levels reduces the amount of moisture available. It also makes the vagina thinner and less elastic. It is also the second most common discomfort of all sexually active women. Many women first notice their vaginal dryness when intercourse becomes uncomfortable, even painful. It can undermine self-confidence, moods and interfere with normal daily activities and cause a general sense of discomfort.

##### The causes of vaginal dryness

The most common cause is a decrease in natural vaginal fluids due to hormonal changes, such as in the second half of the menstrual cycle or linked to menopause. But there are many other factors as well that can cause or increase the problem, such as: use of hormonal contraceptives or certain medications, soap, tampons, stress, fatigue, pregnancy and childbirth, and also intercourse without proper lubrication by your natural fluids or a suitable product such as LiquiGel.

